

F911X User's manual



F911X English Manual

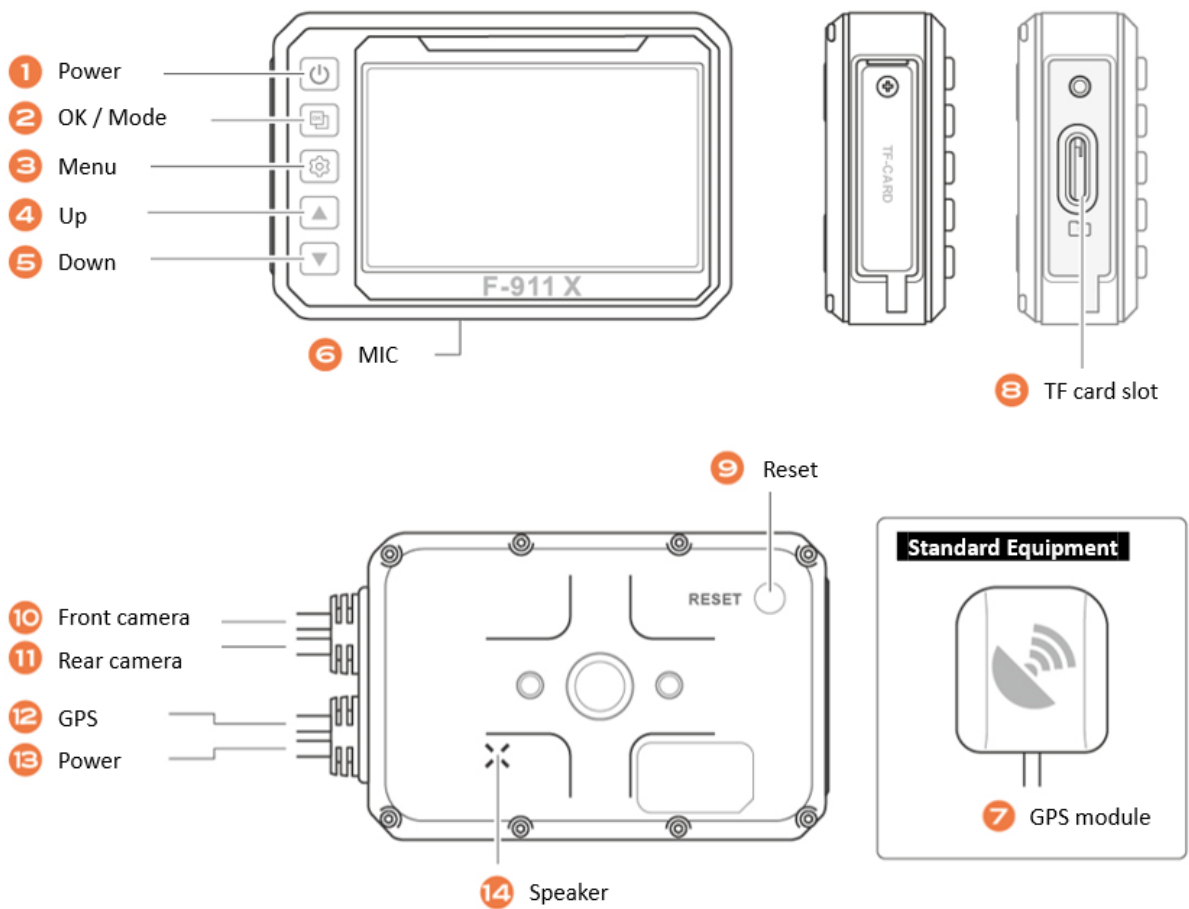
Thank you for purchasing the motorcycle camera F911X. This manual will go over how to properly use the dashboard camera and provide you with detailed product information regarding operation, precautions, and technical data. Please read this manual carefully.

Disclaimer

The dashcam is provided as is and the recording videos is only for reference, the final adjudication will be judged by the police officer.

- In order to ensure the integrity of the video, please use a genuine high-speed U1 memory card (writing speed 40MB/s above) and format it regularly every 30/45 days.
- The terms and conditions are subject to change at any time without prior notice.

Product Structure



1. Power
2. OK / Mode
3. Menu
4. Up button
5. Down button
6. MIC
7. GPS module
8. TF card slot
9. Reset
10. Front camera (BLUE)
11. Rear camera (GREEN)
12. GPS connector (BLACK)
13. Power cable (RED)

Product Features

- FHD 1080P for dual front & rear camera
- Dual SONY IMX307 + HDR sensor, no overexposure at night
- IP67 Waterproof display & IP68 Waterproof lens
- TS technology to save the recording file every second
- 3" display gives wider viewing field, no blind spots behind
- Wi-Fi connectivity for real-time monitoring via APP
- Flexible installation, including 3 different types of mounts
- Pop up memory card format notification
- GPS function shows speed, direction, altitude, and atmospheric pressure
- Optional wireless remote controller to lock the critical file & take photos

Key Operation

Long press ④ Up button to turn off the Wi-Fi before using the below buttons.

Button	Recording	Stop recording	Setting Page
① Power	1. Long press 3 seconds to turn on/off the camera. 2. Short press once to turn on/off the display, go into the screen saver. Note: When the display is off, the below 4 buttons are disabled.		

<p>② OK / Mode</p>	<p>Short press once to stop recording</p>	<p>Long press 3 seconds to</p> <p>1st time: Enter the camera mode, short press to take a photo.</p> <p>2nd time: Enter the playback mode, short press to playback or pause.</p> <p>3rd time: back to the recording mode.</p>	<p>In the setting page, the button works as OK to confirm the setting.</p>
<p>③ Menu</p>	<ol style="list-style-type: none"> 1. Short press to lock the current recording file. 2. Long press 3 seconds to enter the sport mode; short press again back to the previous interface. 	<ol style="list-style-type: none"> 1. According to the current mode (recording/camera/playback), short press to enter the mode setting page, and short press again to enter the general setting page. 2. Long press 3 seconds to enter the sport mode; short press again back to the previous interface. 	
<p>④ Up button</p>	<p>Short press to turn on/off the Wi-Fi</p> <p>Note: WIFI default setting is OFF</p>	<p>In the Playback mode, short press to rewind the video.</p>	<p>Scroll through menu items</p>
<p>⑤ Down button</p>	<p>Short press to switch the front camera image, rear camera image or PiP (Picture-in-Picture).</p>	<p>In the Playback mode, short press to fast forward the video.</p>	<p>Scroll through menu items</p>
<p>⑨ Reset</p>	<p>Back to the default setting</p>		

Note:

When Wi-Fi is on, all the buttons are disabled. Please turn off the WIFI before pressing the buttons.

Optional Wireless Remote Controller

1. The controller is optional. The wireless design can be flexibly installed and used.
2. The camera and the controller will be automatically connected within 3 meters.

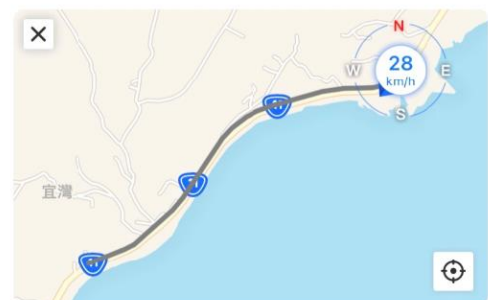


GPS Functions

1. Use the GPS to record the speed, route, altitude, and atmosphere pressure.
2. Date & Time will be automatically updated when the GPS is connected.

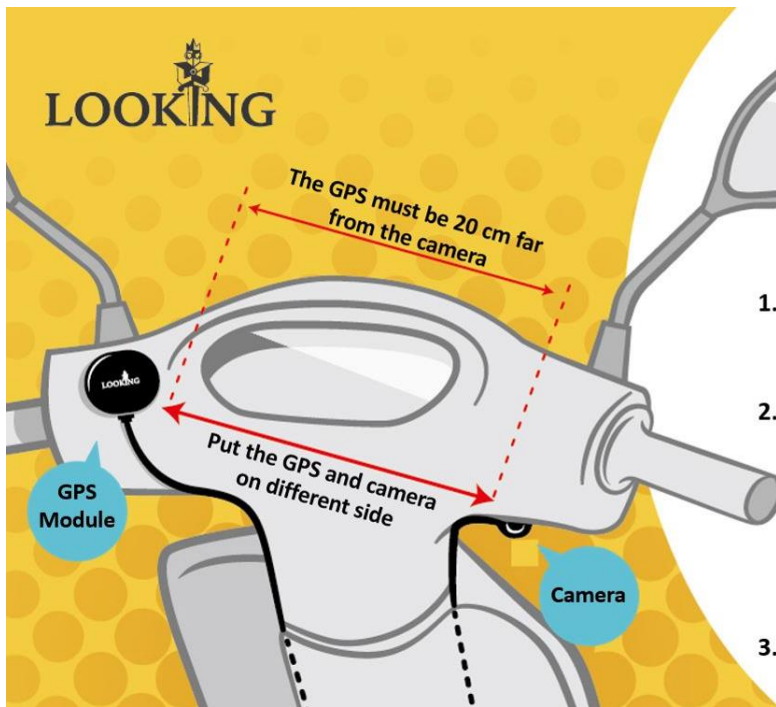


Recording Video



APP Playback

GPS Installation



GPS Installation Notice

1. Put the GPS mark side up. Don't cover the GPS or put it next to any metal, or it will have interference of signal reception.
2. The reception of the GPS is related to the environment and the weather. Riding for 5-8 minutes to test the GPS is connected or not. After connection you can fix it tightly.
Note: The first-time connection will be longer, after that it will be connected automatically.
3. The GPS cable must be tied up independently.

Sport Mode



Long press 3 seconds the  Menu button to enter the sport mode.

Streaming Media Rearview Mirror

1. IP67 Waterproof 3" display, can be installed outside and used as rearview mirror.
2. The default setting is rear camera image.



Only when connecting the GPS,

the riding speed, route, altitude, and the atmospheric pressure will be recorded.

Product Specification

Sensor	SONY IMX 307 + HDR
Resolution	FHD 1080P 30fps + HDR
Viewing Field	140 degrees
Monitor	3" IPS display
IP Rating	Display: IP67 Front & Rear Camera: IP68
Video Format	TS
Photo Format	JPG
WIFI	YES
GPS	YES
MIC	YES
Battery	Supercapacitor
Power Supply	DC 5V
Memory Card	Max. 128G Micro SD card (U1 writing speed 40MB/s above)
Dimension	100 x 66 x 25 mm
Weight	102g
Working Temp.	-10 ~ 60°C
APP	LOOKING CAM
Wireless Remote	Optional

Installation

1. The display monitor is IP67 waterproof, it can be mounted outside. There are some different types of mounts can be used.
2. Hidden installation of the camera lens, adjust the lens angle to the right direction when the installation is done.
3. Please use the full set of the cable and machine, the Power cable transforms the voltage from 12V-24V to 5V. Please connect red cable to Key-on and black to GND.
4. The GPS module must be put on the exterior, cannot be covered by any plastic or metal. The wire of the GPS module must be tied up independent to avoid any signal interference and keep 20 cm far from the camera.

Insert Micro SD card

1. Insert the Micro SD card according to the indicated direction.
2. To remove the memory card, push the card in and the card will automatically pop out.
3. Press the TF card slot cover tightly to make sure it's well sealed.

Note:

1. Before use, please format the memory card when using a new card in this device.
2. Please use the U1 Micro SD card (Writing speed 40MB/S above).

Pop Up Memory Card Format Notification

1. A notice to remind users to format the memory card. The default setting is 30 days.
2. Reminder methods: (1) Display monitor (2) Lookingcam APP.
3. When the notification pops up, the machine is still recording in the background.
4. After formatting the card, all the files will be deleted. Please save the important files before formatting.

Note: Format the memory card regularly to extend the lifespan of the card and ensure the camera is recording stably.

WIFI APP

Please scan the QR code to download the APP,
or search LOOKING CAM on Google play/APP store.



iOS Looking CAM



Android Looking CAM

1. Scan the QR code to download the app.
2. Switch on the motorcycle camera and Wi-Fi function (the Wi-Fi default setting is OFF).
3. The Wi-Fi name & password will show on the display. Password: 12345678.
4. After the device is linked, you may now use the APP.
5. Only when connecting the GPS, the riding speed, route, altitude, and the atmospheric pressure will be recorded. The recording route will be shown when playback.

Note: When the device is on, the Wi-Fi is auto OFF. Long press **4** Up button to turn on the WIFI when connecting the APP. Long press **4** Up button to turn off the Wi-Fi before using the other buttons.

Problem Shooting

- Can't record: Check the TF card if there is enough space.
- Stop recording while riding: (1) Check the TF card if is U1 and with writing speed 40MB/S above. The TF card writing & reading speed is strongly required. (2) Check the loop recording is on or not.
- Memory card error: (1) Check the TF card if is U1 and with writing speed 40MB/S above. The TF card writing & reading speed is strongly required. (2) Check if it's Pop Up Memory Card Format Notification.
- "Wrong file" or "damaged file" showed: Check the TF card and format it (please use the device to format the memory card, not by PC). If the TF card has problem, the file can't be

saved properly.

- Fuzzy image: Check the camera lens and clean it.
- The image is shaking: (1) Check the lens bracket is fixed tightly. (2) Check the installation of the device, if it's too closed to the coil and spark plug, it will have signal interference.
- Buttons no work: Turn off the WIFI first, if the WIFI function is on, the buttons will be disabled.

If you need any further assistance, please email to sales@lookingtaiwan.com.

THANK YOU!