



# F911V User's manual



# F911V English Manual

Thank you for purchasing the motorcycle Camera F911V. This manual will go over how to properly use the camera and provide you with detailed product information regarding operation, precautions, and technical data.

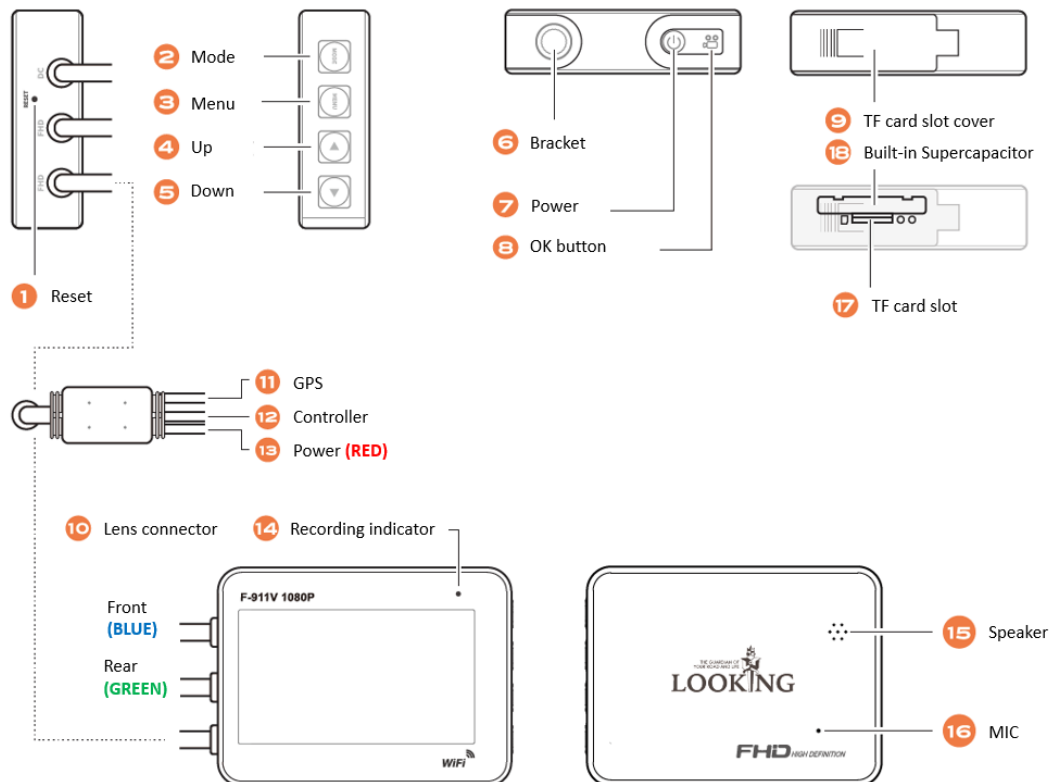
Please read this manual carefully.

## Disclaimer

The dashcam is provided as is and the recording videos is only for reference, the final adjudication will be judged by the police officer.

- In order to ensure the integrity of the video, please use a genuine high-speed U1 memory card and format it regularly every 30/45 days.
- The terms and conditions are subject to change at any time without prior notice.

## Product Structure



1. Reset
2. Mode Button
3. Menu Button
4. Up Button
5. Down Button
6. Bracket fixed position
7. Power

- 8. OK button
- 9. TF Card Slot cover
- 10. Lens Connector
- 11. GPS connector
- 12. Wired/Wireless controller connector
- 13. Power Connector
- 14. Recording light indicator
- 15. Speaker
- 16. MIC
- 17. TF card slot
- 18. Built-in supercapacitor

\* 4. Up Button: Turn on/off WIFI

\* 5. Down Button: Switch camera display (Need to turn off the WIFI first)

### **Optional Wired Controller (6 Functions)**

Function:	Light:
1. Photo snapshot:	Red light flashes once
2. Lock the critical files	Red light flashes once
3. MIC	
4. Recording indicator	Green light keeps flashing
5. Memory card format notification	Red light flashes twice + Green light flashes once
6. Format memory card  (For the FW version V6.09 above)	Long press snapshot button 5 seconds and red light will start flashing, during the flashing press the snapshot button again then the red light will start quick flashing. When the format is done, the green light will start flashing



Learn more from the video:



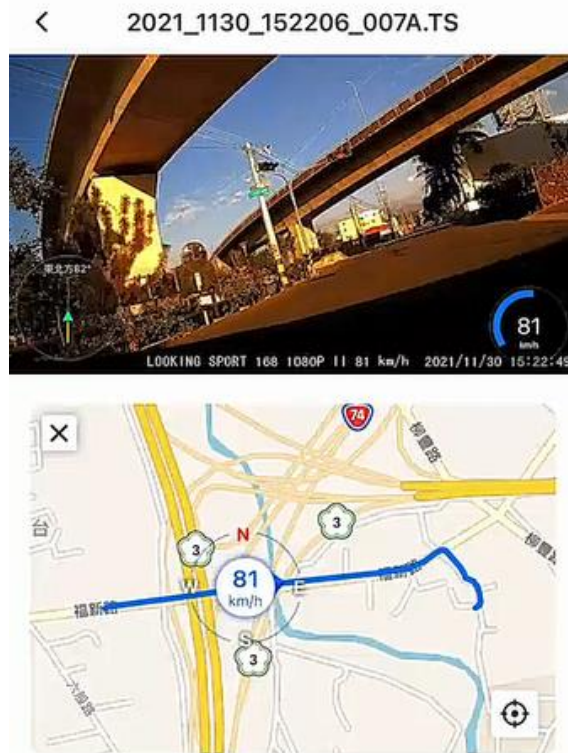
**Optional Wireless Controller (2 Functions)**

Function:	Light:
1. Photo snapshot:	Green light flashes once
2. Lock the critical files	Red light flashes once

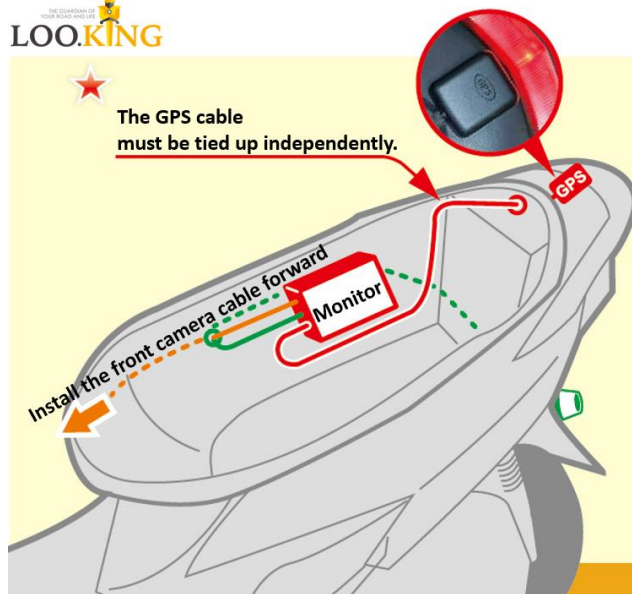


## Optional GPS Module

Record speed & route



LOO.KING



### GPS Installation Notice:

1. Put the GPS module like the attached photo, the GPS mark side up. Don't cover the GPS or put it next to any metal, or it will have interference of signal reception.
2. The reception of the GPS is related to the environment and the weather. Riding for 5-8 minutes to test the GPS is connected or not. After connection you can fix it tightly. (The first-time connection will be longer, after that it will be connected automatically).



## Product Features

1. Dual Channel: FHD 1920x1080
2. Auto white Balance adjustment
3. Lens angle 140 degree
4. 2.7inch TFT display (16:9)
5. Supports max. 128G micro SD card

## **Key Operation**

1. Power button: Long press to turn on/off the machine
2. OK button:  
  
In video mode, press to start/stop recording  
  
In photo mode, press to take pictures  
  
In playback mode, press to start/stop playback  
  
In the menu settings, press to confirm selection or enter selected menu
3. Mode button: With recording paused, short press to switch between video, photo, or playback modes.
4. Menu button: With recording paused, short press to enter the settings menu.
5. Up button: (1) Turn on/off WIFI. 2) Scrolls through menu items.
6. Down button: Scrolls through menu items

## **Installation**

1. Hidden installation of the display and lens.
2. Connect the red cable to ACC Key-on (+), and black to GND.
3. Please use the full set of the cable and machine, the car charger transforms the voltage from 12V-24V to 5V.
4. Adjust the lens angle when the installation is done.
5. The controller has built-in MIC, don't cover it when installation.
6. The position of the GPS module must be put on the exterior, can not be covered by any plastic or metal. The wire of the GPS module must be tied up independent to avoid any signal interference.

## **Insert Micro SD card**

1. Insert the Micro SD card according to the indicated direction

2. To remove the memory card, push the card in and the card should automatically pop out.


**Note:**

1. Please format the memory card when using a new card in this device for the first time.
2. Please use the U1 micro SD card. (40MB/S above)

### **Power On/Off & Auto Shut-Off**

1. Long press to turn on/off the machine.
2. The machine can be programmed to shut down automatically to save power; if the machine is not recording, it will automatically shut off.


### **Recording Mode**

1. Recording mode is the default mode for this device. When in recording mode, you will see the  icon in the upper left-hand corner and a flashing ● icon.
2. In recording mode, short press to start/stop recording.
3. Press menu button to enter the video settings menu, up and down buttons can scroll through menu items. Under the video settings menu, you can choose the resolution, segment of recording, audio on/off...etc.
4. Use controller: Press the lock button to save the current recording file; press the camera button to take a photo.


**Note:**

The machine will be powered automatically when turn the key on, please don't remove the TF card when the machine is recording.

## Camera Mode

1. Short press to start/stop recording and enter the camera mode by using the mode button. When in camera mode, you will see the  icon in the upper left-hand corner
2. Press menu button to enter the camera settings menu, up and down buttons can scroll through menu items. Under the camera settings menu, you can choose the resolution, color, contrast...etc.

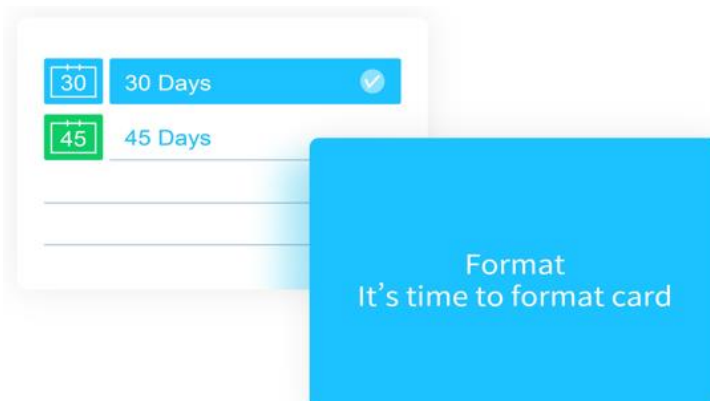
## Playback Mode

1. Short press to start/stop recording and enter the playback mode by using the mode button. When in playback mode, you will see the  icon in the upper left-hand corner
2. Press menu button to enter the playback settings menu, up and down buttons can scroll through menu items. Under the playback settings menu, you can delete or save the recordings.

## Pop Up Memory Card Format Notification

1. A notice to remind users to format the memory card. In the setting menu there are options for 30 or 45 days. Default setting is 30 days.
2. Reminder methods: (1) Camera display (2) Lookingcam APP (3) Wired controller

**Note: Format the memory card regularly to extend the lifespan of the card and ensure the camera is recording stably.**



## **General Settings**

Press menu button to enter the settings menu, press twice the menu button to enter the general settings menu.

- Date/Time: Use the Up and Down buttons to set the correct values and press Ok to confirm.
- Auto shut-off: The machine can be programmed to shut down automatically to save power.
- Languages: Multiple languages supported.
- Key tone: Turn on/off the key tone.
- Format: Format the micro SD card.
- Screen saver: Once the machine has started recording, the screen can be set to turn off
- Version: To view the current software version for the machine.

## **WIFI APP**

Please scan the QR code to download the APP,  
or search LOOKING CAM on Google play/APP store.



iOS Looking CAM



Android Looking CAM

1. Scan the QR code to download the app
2. Switch on the motorcycle DVR and WIFI function (the WIFI default setting is on)
3. The WIFI name & password will show on the display. Password: 12345678
4. After the device is linked, you may now use the APP
5. Only when connecting the GPS, you will find the route & speed when playback.

PS. When the device is on, short press ▲ you can turn off the WIFI function, and press the ▲ to turn on the wifi function.

## Product Specification

Sensor	Dual channel 1920x1080 SC2233
Lens	F 1.8
Display	2.7" LCD TFT 16:9
Resolution	Dual channel FHD1080P 30fps
Audio	Built-in MIC/Speaker
Memory card	Max. 128G Micro SD (U1)
White balance	Auto
Power supply	Multi-pin connector Input: 12V-24V 2A Output: 5V 2A
Battery	Supercapacitor
Size	74 x 54 x 20 mm / 78g
Working humidity	10%-80%
Working Temperature	-10 °C ~ +65°C

## Problem Shooting

- Can't record: Check the SD card if there is enough space.
- Stop recording while riding: (1) Check the SD card if is Class 10 and with 80MB/S above. The SD card writing & reading speed is required to this device. (2) Check the loop recording is on or not.
- "Wrong file" or "damaged file" showed: Check the SD card and format it (please use the device to format the SD card not by PC). If the SD card has problem the

file can't be saved properly.

- Fuzzy image: Check the camera lens and clean it.
- The image is shaking: (1) Check the lens bracket is fixed tightly. (2) Check the installation of the device, if it's too closed to the coil and spark plug, it will have signal interference.
- Buttons no work: Turn off the WIFI first, if the WIFI function is on, the buttons can't work.

If you need any further assistance, please email to [sales@lookingtaiwan.com](mailto:sales@lookingtaiwan.com).

THANK YOU!